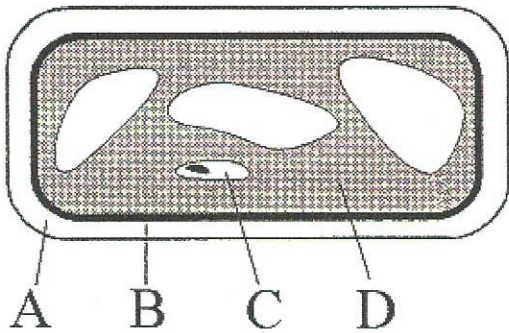


- B. digests food
  - C. excretes waste
  - D. provides energy to carry out life activities
- 14) Acid begins breaking down food as soon as it enters the stomach. If a person did not produce acid, which would be most affected?  
Most directly affected would be their \_\_\_\_\_.
- A. digestive system
  - B. circulatory system
  - C. nervous system
  - D. muscular system
- 15) Which of the following structures in an animal cell separates the cell's contents from the outside environment?
- A. cell membrane
  - B. cell wall
  - C. epidermis
  - D. mitochondria
- 16) A student observes a dog, a tree, a cat, and a bird. Which of the organisms that the student sees has different cells than the rest, and how are the cells different?
- A. The bird is different because its cells are the only ones without a nucleus.
  - B. The cat is different because its cells are the only ones with a cell membrane.
  - C. The dog is different because its cells are the only ones without a cell wall.
  - D. The tree is different because its cells are the only ones with a cell wall.
- 17) This question refers to the following diagram of a plant cell.



What does D represent?

- A. nucleus
  - B. ribosomes
  - C. organelles
  - D. cytoplasm
- 18) The brain controls the body. In an individual cell, which of the following is most comparable to the brain?
- A. cell membrane
  - B. cell wall
  - C. cytoplasm
  - D. nucleus
- 19) Which answer below best describes the future of our knowledge about how organelles function?
- A. Knowledge about how organelles function will probably stay the same. Scientists have learned all there is to know about organelles.
  - B. Knowledge about how organelles function will probably stay the same. Scientists don't like to learn new information.
  - C. Knowledge about how organelles function will probably change because scientists like to change things.
  - D. Knowledge about how organelles function will probably change because new chemistry will provide new information about organelles.
- 20) How are plant cells different from animal cells?
- A. Mitochondria are found only in plant cells.
  - B. Animal cells do not have chloroplasts.
  - C. Plant cells make copies of themselves by dividing.
  - D. Animal cells have cell walls.
- 21) Which job is done by the cells in a plant but not by the cells in your body?