

Name: _____

Date: _____

1) Which letter correctly identifies the 5 levels of organization from **simplest** to the most **complex**?

- A. person, muscle cell, heart, circulatory system, cardiac muscle tissue
- B. person, circulatory system, heart, cardiac muscle tissue, muscle cell
- C. muscle cell, heart, cardiac muscle tissue, circulatory system, person
- D. muscle cell, cardiac muscle tissue, heart, circulatory system, person

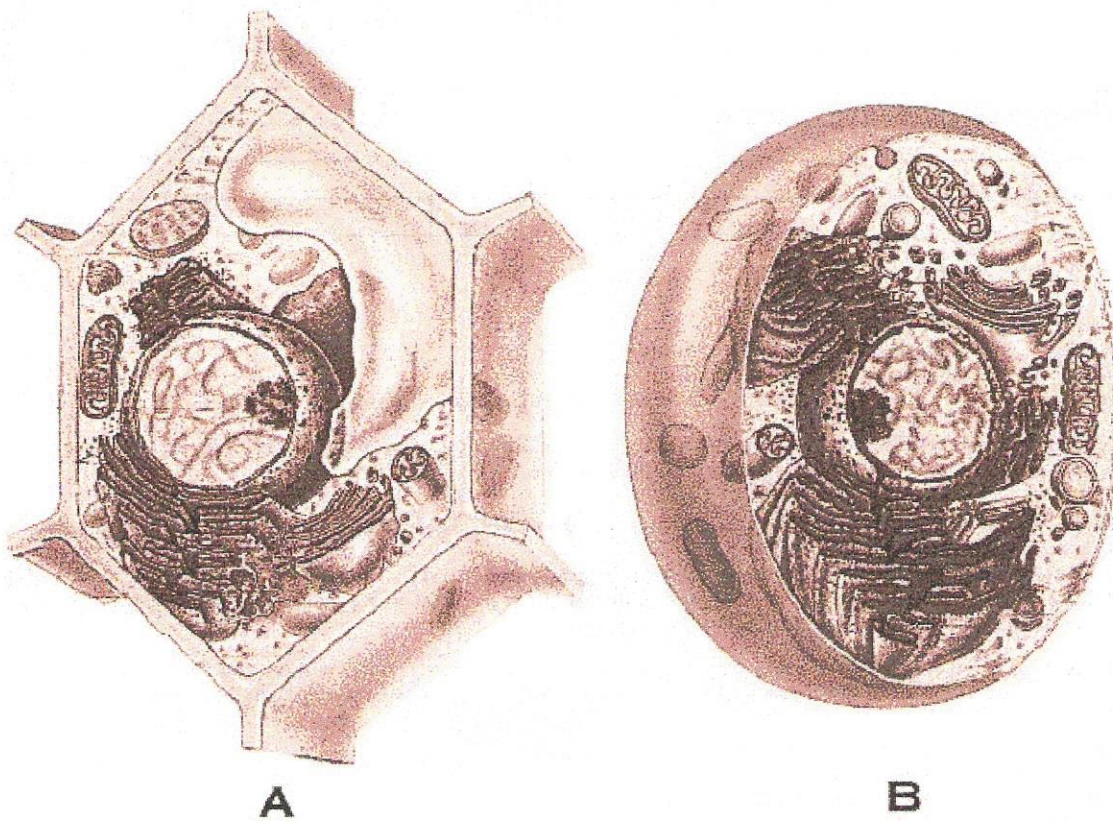
2) What does the chloroplast do in the cell?

- A. carries water
- B. removes waste
- C. carries out photosynthesis
- D. supports the cell

3) What do plant cells have that animal cells do not?

- A. cell membrane
- B. cell wall
- C. ribosomes
- D. cytoplasm

4)



Use the diagram above to answer the following question.

Cell A is what kind of cell?

- A. animal
- B. amoeba
- C. plant
- D. bacteria

5) Which of the following is an example of an organism?

- A. a tree